

# Mental Mathematics - Set F - Test 1

First Name :	
Last Name :	
Teacher :	Class :

Total

P

Marked by \_\_\_\_\_

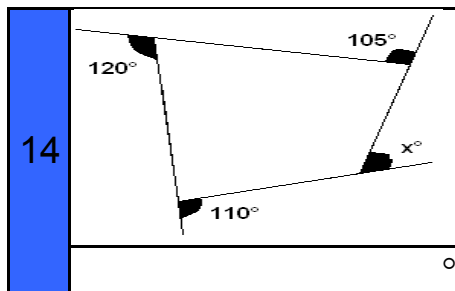
Answer					
1		836			

Mark

Answer					
13		km/h			

Mark

2	0.6	0.47	<	>
---	-----	------	---	---

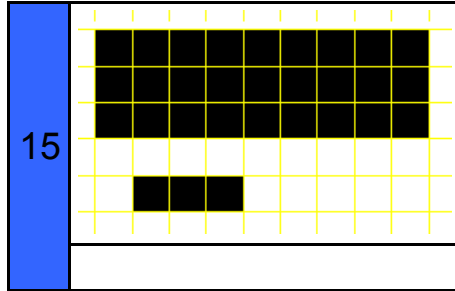



3		18/45
---	--	-------

4		%
---	--	---

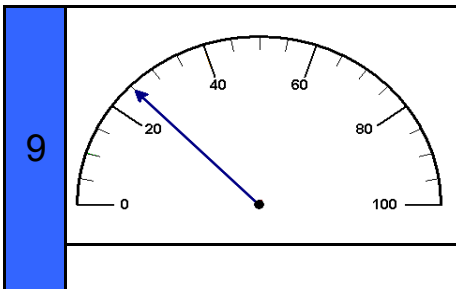
5	2,	,	8, 11
---	----	---	-------

6		wy
---	--	----

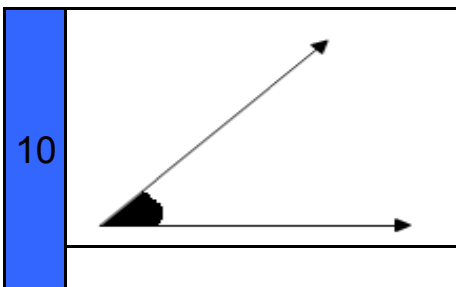



7		24 : 16
---	--	---------

16	135°	225°	315°
----	------	------	------




17	3, 3, 5, 6, 13
----	----------------




18	correlation
----	-------------

11	2	3	20	30
----	---	---	----	----

19		
----	--	--

12		3 : 4
----	--	-------

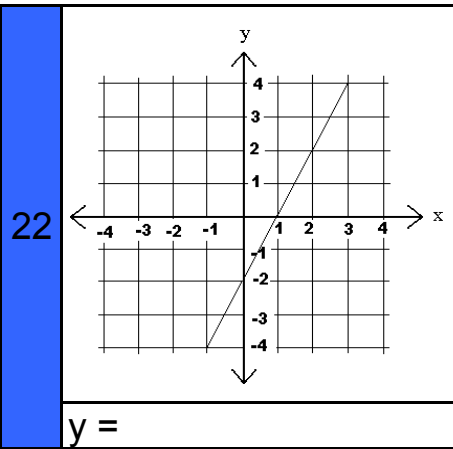
20

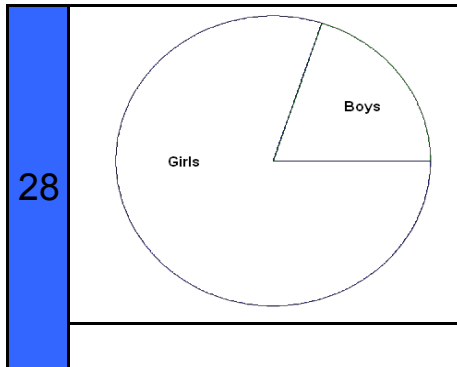
	Boys	Girls
With glasses	4	6
Without glasses	10	9

# Side 2

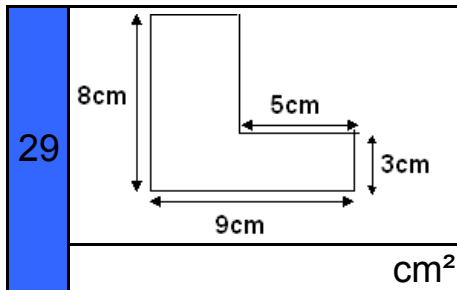
21  12

27   $5x+3=10$





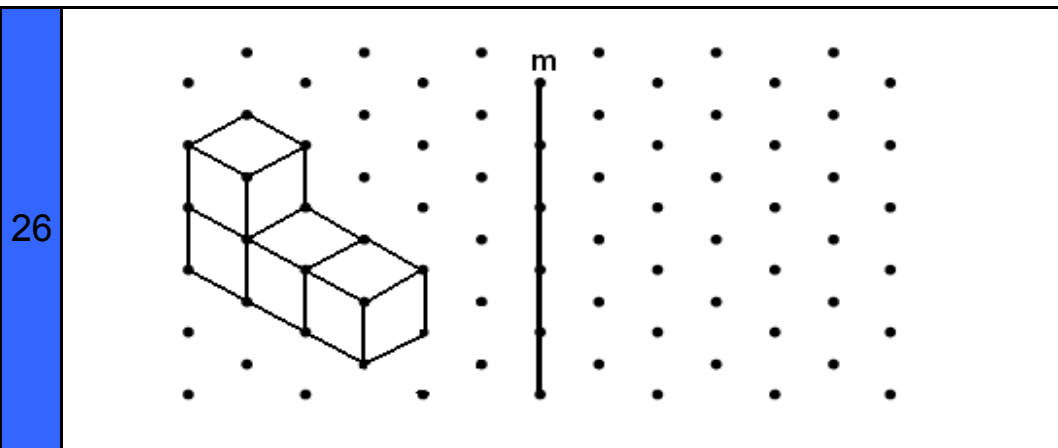

23   $2\frac{1}{2}$




24   $4:5$

25  1 3 5 6 7 9 ?

30



# Mental Mathematics - Set F - Test 1

***I am going to start with the practice question. I will then ask you 30 questions for the test. You will see a box on your answer sheet to write your answer. For some questions there will be some information on the sheet to help you.***

***I will read each question twice, and then you will have some time to work out the answer and write it down.***

***Here is the Practice Question. You will have 5 seconds to complete this question.***

<b>P</b>	<b>Write three quarters as a decimal</b>
----------	--

***Put your pens or pencils down. The answer is ...0.75..... Are there any questions?***

***Now we are ready to start the test. For the first group of questions you will have 5 seconds to work out each answer and write it down.***

Answer    Question    Question  
                  Number

800	1	Approximate the number shown to one significant figure.
>	2	Write in the correct symbol to make the sum correct.
2 / 5	3	Write the fraction eighteen over forty-five in its simplest form.
35%	4	Charlotte obtained thirty five out of fifty in her maths test. What percentage in this?
5	5	Write in the missing number in the sequence shown?
10	6	If <b>w</b> equals two and <b>y</b> equals five write down the value of <b>wy</b> ?
3 : 2	7	Write the ratio shown in its simplest form
100l	8	Circle the approximate capacity of a water storage tank
25	9	What number is the arrow pointing to?
acute	10	What is the name of the angle shown?

***For the next group of questions you will have 10 seconds to work out each answer and write it down.***

Answer    Question    Question  
                  Number

20	11	Circle which answer you think is the best estimation to the sum six hundred and thirty-three divided by thirty-one?
9	12	In Lucy's wardrobe, her skirts and dresses are in the ratio of three to four. Lucy has twelve dresses, how many skirts does she have?
4	13	David walks six kilometres in one and a half hours? What is his average speed?
25°	14	The three angles shown are 105°, 110° and 120°. What is the missing angle?

# Mental Mathematics - Set F - Test 1

3	15	The small shape has been enlarged to the big shape shown. What is the scale of enlargement?
$225^\circ$	16	Circle the bearing that would be the equivalent of travelling South West
6	17	What is the mean of the numbers shown?
Positive	18	What type of correlation can be used to describe the weights and heights of giraffes?
$\frac{1}{2}$ or $\frac{3}{6}$	19	What is the probability of throwing a prime number with one die?
10	20	How many people wore glasses?

**For the next group of questions you will have 15 seconds to work out each answer and write it down.**

Answer	Question Number	Question
20	21	What is the new total if twelve is increased by two-thirds?
$y=2x-2$	22	What is the equation of the line shown on the axis?
15	23	How many sixths are there in two and a half?
15	24	The ratio of boys to girls in Santiago's class is four to five. The class has twenty-seven students, how many are girls?
4	25	The mean of the seven numbers is five. What is the missing number?
See Below	26	Reflect the isometric shape in the mirror line m
2.6	27	Solve the equation $5x + 3 = 10$ . Write your answer as a decimal
$72^\circ$	28	There are thirty students in a dance class. Twenty four are girls, and six are boys. What size angle on the pie chart do the boys represent?
$47\text{cm}^2$	29	What is the area of the shape?
$2 \times 2 \times 3$	30	Write twenty-four using prime factors.

**'Put your pens down. The test is over.'**

**Answer to 26**

