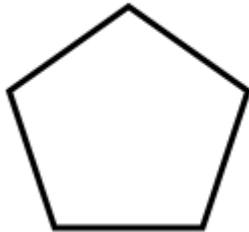


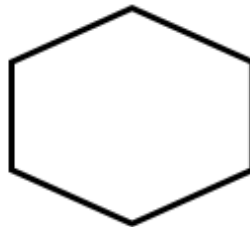
Properties of 2D/3D Shapes, Transformations and Symmetry - Level 2

1. Write down the special names for each of the two polygons below.

a)

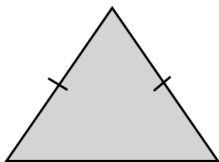


b)

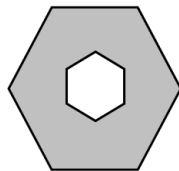


2. How many lines of symmetry do each of the following have?

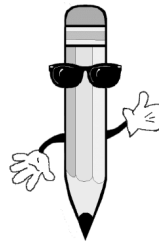
a)



b)



c)

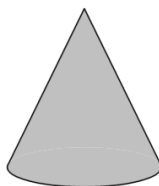


d)

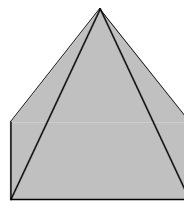


3. Name each of the 3-dimensional shapes below.

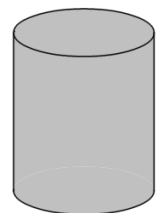
a)



b)



c)



4. This shape is called PENTAGONAL based PYRAMID.

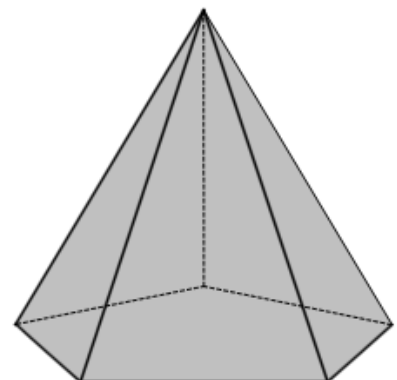
a) How many vertices does it have?

b) How many edges does it have?

c) Copy and complete this sentence: -

" The pyramid consists of faces, one of them being a and the others ares".

1. Shown below is the net of a cuboid.



5.

Sketch the cuboid below and fill in its length, breadth and height.

