



Mathematics Homework

Block 4

Angles Level 3



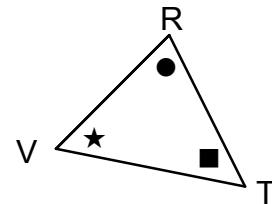
SHOW ALL WORKING!

1. $80^\circ, 79^\circ, 107^\circ, 13^\circ, 202^\circ, 90^\circ, 157^\circ, 92^\circ, 180^\circ, 317^\circ, 61^\circ, 178^\circ$

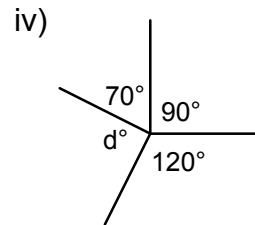
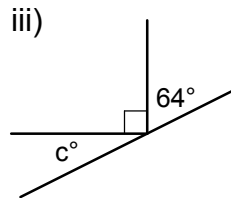
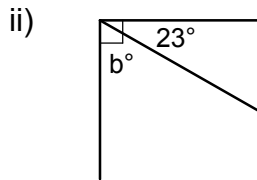
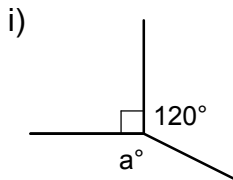
From the angles listed above, write down the ones which are,
 a) Acute b) Obtuse c) Right d) Straight e) Reflex

2. For the triangle shown opposite, use 3 letters each time to name;-

- a) The angle marked ★
 b) The angle marked ●
 c) The angle marked ■

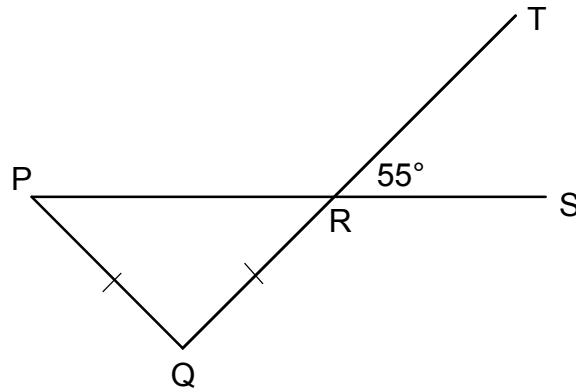


3. Calculate the sizes of angles a, b, c and d below (do not measure them).

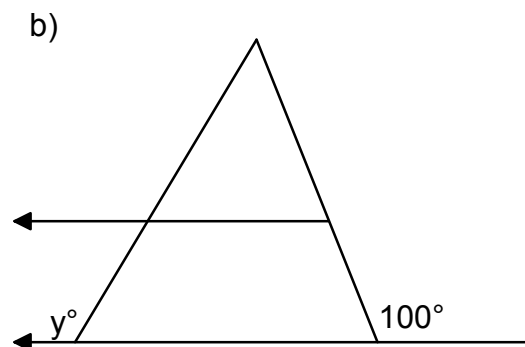
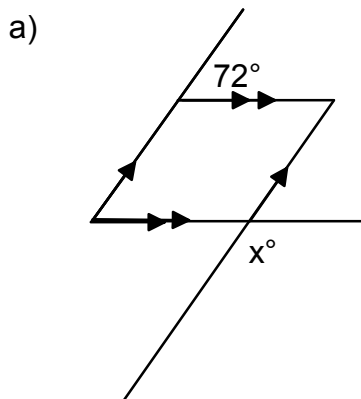


4. In the diagram opposite,
 $\triangle PQR$ is isosceles.
 $PQ = RQ$.
 Angle $TRS = 55^\circ$.

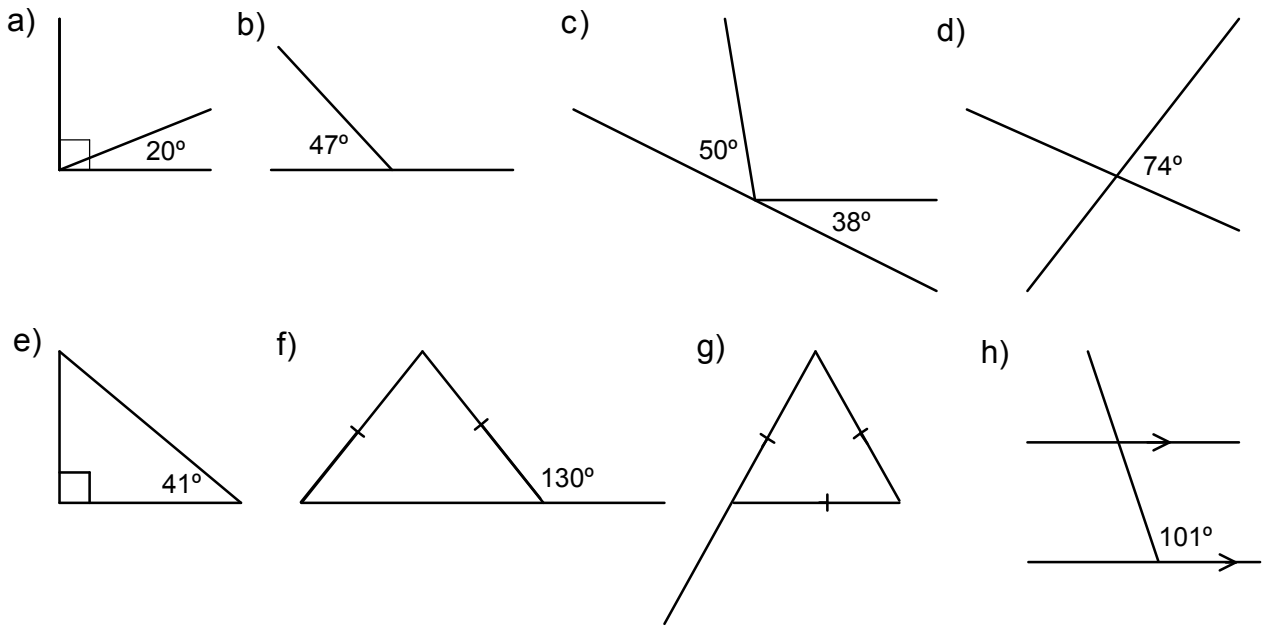
Neatly copy this diagram and fill in the sizes of the 5 remaining angles.



5. By sketching each of the two diagrams below and filling in the required angles, find the values of x° and y° .



6. Copy each of the following diagrams and fill in the sizes of ALL the missing angles. You should make your own diagrams a little larger than those shown. Do not use a protractor, these diagrams are NOT DRAWN TO SCALE.



7. Find the angles marked a-f in the diagrams below (NOT SHOWN TO SCALE).

